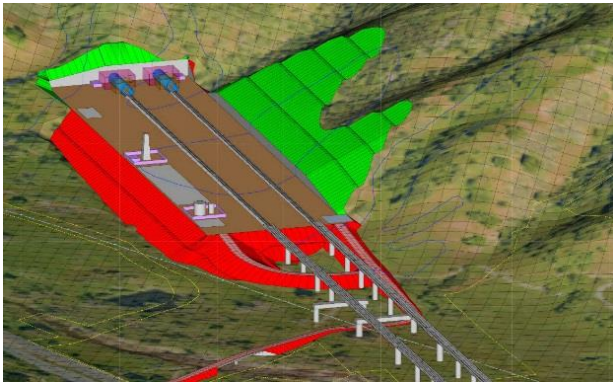


High-Speed railway of San Francisco - Central Valley, United States



Project details

Client: HNTB. End user: CHSRA
Date: In progress
Country: United States
Total investment: \$6,000 M USD
Area: Railways
Main Activity: Preparation of the informative studies

Preparation of the informative studies of the High-speed railway of San Francisco-San Jose and San Jose-Merced in California, United States.

The California high-speed project is one of the largest and most ambitious transport programmes in the history of the United States. It will allow passengers to travel from Los Angeles to San Francisco at speeds of up to 350 kilometres (220 miles) per hour, which translates into 2 hours and 40 minutes, compared to six hours when travelling by car.

Through the use of State and federal funds, the California High Speed Rail Authority (CHSRA) plans to start the train operations before 2022, connecting San Francisco to Los Angeles in less than three hours before 2029. In the future, the system will extend to Sacramento and San Diego, adding a total of 1,287.5 kilometres (800 miles) with up to 24 stations.

Prointec started working on this project in 2009, which is still under development. Its first responsibility involved the railway integration of the San Francisco-San Jose line, operated by CALTRAIN as a commuter service, with the new projected high-speed railway. This line passes through Silicon Valley.

Since 2016, Prointec has prepared the Informative Studies of the San Francisco-San Jose section and the San Jose-Merced section. The first one with a new vision in relation to the 2009 solution, in which the high-speed and commuter services share part of the infrastructure. Both projects have a total of 283 kilometres (176 miles), with unique elements, such as the Monterey viaduct, 44 km in length; the tunnels of the Pacheco Pass, 22 km in length, and San Francisco, Millbrae, San Jose and Gilroy stations, in addition, to the train maintenance facilities in Brisbane and Gilroy.